

# PASSPORT PROGRAM MAPPING TOOL

The individual is applying for:  Community Participation Supports  Respite

## SCORING INSTRUCTIONS

- From the table titled 'Section 1A: Support Needs Ratings' on page 8 of the SIS form, identify the Subscale Percentile for each category listed under 'Assessment Source' below.
- Pick the corresponding support level and circle the appropriate score.

## COMMUNICATION AND SOCIAL ABILITIES

Communicating with others and participating in social activities

### Assessment Source

#### SIS F. Social Activities

Percentile Range	Support Level	Score
1 – 10	Level 1	1
11 – 30	Level 2	4
31 – 60	Level 3	7
61 – 80	Level 4	11
81 – 99	Level 5	15

## COMMUNITY LIVING SUPPORTS

Participating in community living activities

### Assessment Source

#### SIS B. Community Living Activities

Percentile Range	Support Level	Score
1 – 10	Level 1	1
11 – 30	Level 2	5
31 – 60	Level 3	10
61 – 80	Level 4	15
81 – 99	Level 5	20

# PART 1 - COMMUNITY PARTICIPATION SUPPORTS

<b>PERSONAL CARE</b> Managing personal care requirements (e.g. feeding, toileting, mobility)		
<b><u>SCORING INSTRUCTIONS</u></b>		
<ul style="list-style-type: none"> <li>• From the table titled 'Section 1A: Support Needs Ratings' on page 8 of the SIS form, identify the Subscale Percentile for the two categories listed under 'Assessment Source' below.</li> <li>• Identify the higher percentile from the two categories (where the percentile for the two categories is not the same) and select the corresponding support level.</li> <li>• Circle the appropriate score.</li> </ul>		
<b>Assessment Source</b>		
<b>SIS</b> <b>A. Home Living Activities</b> <b>E. Health and Safety Activities</b>		
Percentile Range	Support Level	Score
1 – 10	Level 1	1
11 – 30	Level 2	4
31 – 60	Level 3	7
61 – 80	Level 4	11
81 – 99	Level 5	15

## MEDICAL

Intervention and support required to address exceptional medical needs

### SCORING INSTRUCTIONS

- From Page 6 of the SIS form (Section 3A: Medical Supports Needed), identify the total score\* and select the corresponding support level below.

\* If the total is between 1 and 5, look within the Section 3A table to see if there is at least one medical support need with a score of 2. If this is the case select Level 3, otherwise select Level 2 as indicated below.

### Assessment Source

#### SIS 3A. Medical Supports Needed

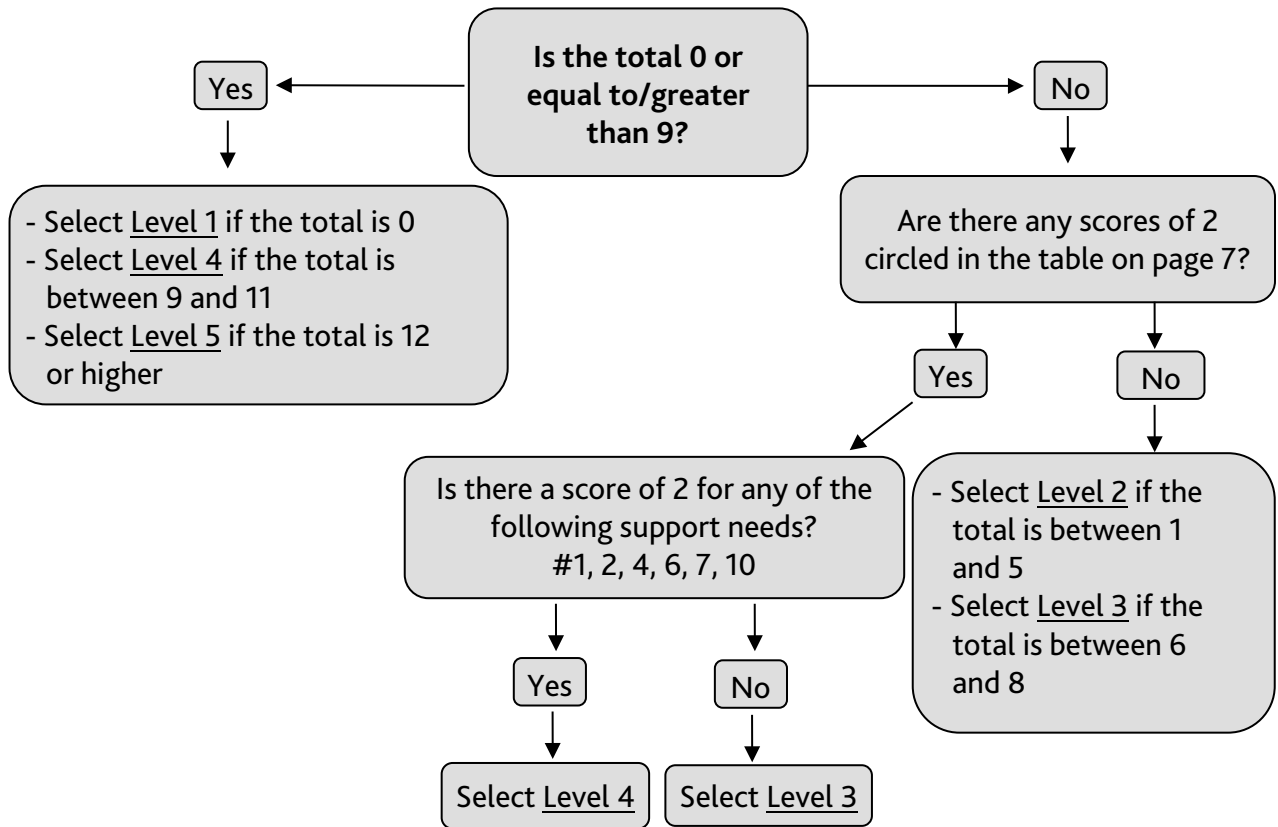
Rating	Support Level	Score
0	Level 1	0
1-5	Level 2	3
6-8 or at least one support need with a score of 2	Level 3	7
9-13	Level 4	11
$\geq 14$	Level 5	15

## BEHAVIOUR

Intervention and support required to address exceptional behaviour needs

### SCORING INSTRUCTIONS

From Page 7 of the SIS form (Section 3B: Behaviour Supports Needed), identify the total score and use the following flowchart to select a support level below:



### Assessment Source

#### SIS 3B. Behavioural Supports Needed

Rating	Support Level*	Score
0	Level 1	0
1-5	Level 2	5
6-8	Level 3	15
9-11	Level 4	20
>=12	Level 5	25

\* The support level for the behaviour category SHOULD NOT be selected without using the flowchart above.

## GOVERNMENT- FUNDED/ FORMAL SUPPORTS

Access to existing government-funded/ formal supports

### SCORING INSTRUCTIONS

- This part is scored based on information from questions 1 to 9 of the Current Services and Supports section of the ICE Record.

Note: Before rating secondary school as an existing support (question 5) in this part, verify the individual's age in the Person Profile. If the individual is 21 years of age or older, or will be turning 21 within six months of the date the mapping tool is being completed, then DO NOT consider school as an existing support.

### Assessment Source

ICE Form  
Current Services and Supports (Questions 1 to 9)

Rating	Support Level	Score
Group Living Supports	Level 1	0
A rating of '30 hours or more per week' in question 2, 8 or 9	Level 2	2
Any government-funded residential arrangement (except Group Living)  OR  A rating of '30 hours or more per week' in question 5 or 7	Level 3	4
All other support arrangements not identified above	Level 4	6
No support is identified in questions 1 to 9	Level 5	10

<b>CPS SUMMARY</b>	
<b>Category</b>	<b>Score</b>
Communication and Social Abilities	
Community Living Supports	
Personal Care	
Medical	
Behaviour	
Government-Funded/Formal Supports	
<b>CPS Score</b>	
<b>CPS Allocation</b>	

# CPS Funding Grid

CPS Score	Funding Amount		CPS Score	Funding Amount
3	1200		40	8650
4	1380		41	8950
5	1560		42	9250
6	1740		43	9550
7	1920		44	9850
8	2100		45	10150
9	2280		46	10450
10	2460		47	10750
11	2640		48	11050
12	2830		49	11350
13	3020		50	11650
14	3210		51	11950
15	3400		52	12250
16	3590		53	12550
17	3780		54	12950
18	3970		55	13350
19	4160		56	13750
20	4350		57	14150
21	4540		58	14550
22	4730		59	14950
23	4920		60	15350
24	5110		61	15850
25	5300		62	16350
26	5490		63	16850
27	5680		64	17350
28	5870		65	17850
29	6060		66	18350
30	6250		67	18850
31	6475		68	19600
32	6700		69	20350
33	6925		70	21100
34	7150		71	21850
35	7375		72	22625
36	7600		73	23400
37	7825		74	24175
38	8050		75+	25000
39	8350			

## Part 2 – Respite

Category	CPS Score	Respite Factor	Respite Score
<b>Individual Support Needs</b> <ul style="list-style-type: none"> <li>- Identify scores for the following categories from the CPS part of the tool</li> <li>- Multiply each score by the respite factor to determine the respite score</li> <li>- Add up the scores to get the Individual Support Needs score</li> </ul>			
Communication and Social Abilities		x 0.16	
Community Living Supports		x 0.12	
Personal Care		x 0.40	
Medical		x 0.32	
Behaviour		x 0.34	
<b>Score</b>			<b>/24</b>
<b>Government-Funded/Formal Supports</b> <ul style="list-style-type: none"> <li>- Identify the score from the CPS part of the tool</li> <li>- Multiply it by the respite factor to determine the respite score for this</li> </ul>			
		x 0.6	
<b>Score</b>			<b>/6</b>
<b>Caregiver Concerns</b> <ul style="list-style-type: none"> <li>- Look at questions 2 to 5 in the sections titled 'Health Status of Unpaid Primary Caregiver' and 'Other Family Member Caregiver Concerns' of the ICE Record</li> <li>- Add the ratings from these questions – only ratings greater than 1 ('No Impact') should be considered</li> <li>- Circle the appropriate score based on the guidelines below</li> </ul>			
Total is equal to or greater than 10 <b>OR</b>		8	
At least two ratings of 5			
Total is between 8 and 9 <b>OR</b>		6	
One rating of 5			
Total is between 5 and 7 <b>OR</b>		4	
At least one rating of 4			
Total is between 2 and 4		2	
All questions are scored at 1 ('No Impact') or section is not completed		0	
<b>Score</b>			<b>/8</b>
<b>Single Caregiver</b> <ul style="list-style-type: none"> <li>- Identify if the caregiver is a single primary caregiver from the Person Profile</li> </ul>			
Single primary caregiver		2	
More than one primary caregiver		0	
<b>Score</b>			<b>/2</b>
<b>Total (rounded to a whole number)</b>			<b>/40</b>



# Respite Funding Grid

Score	Funding Amount		Score	Funding Amount
1	600		21	4925
2	800		22	5200
3	1000		23	5475
4	1200		24	5750
5	1400		25	6025
6	1600		26	6375
7	1800		27	6725
8	2000		28	7075
9	2200		29	7425
10	2400		30	7775
11	2625		31	8220
12	2850		32	8665
13	3075		33	9110
14	3300		34	9555
15	3525		35+	10000
16	3750			
17	3975			
18	4200			
19	4425			
20	4650			

Respite Summary	
Respite Score:	
Respite Allocation:	

<b>Record of Decision</b>	
<b>Region:</b>	
<b>Date:</b>	
<b>Evaluator Name:</b>	
<b>Applicant Name:</b>	
<b>Applicant Date of Birth:</b>	
<b>CPS Allocation Amount:</b>	
<b>Respite Allocation Amount:</b>	
<b>Total Allocation Amount:</b>	

**Evaluator Signature:**

**Supervisor Signature:**